



Dillman *

Descendants and Ancestors

(*Including other known variations of Dillmann, Stillman, Tillman, Dielman, Dhyllmann, Dihlmann, Dillaman, Tighlman, Dieleman, etc.)

The Official Publication of the Dillman Family Association – Published Quarterly

Volume 2, No. 1

September 2009

Phil Dillman - Editor

dillmanfamilyassociation.org

pd62pepsi@sbcglobal.net

INSIDE THIS ISSUE:

*. Words from Phil

1. Germany 2009!

2. The Vachel Dillman group

3. Wendell Dillmann of France

4. Dillmans in LaSalle Co., IL

5. Upcoming Reunions

6. Dillman Businesses

7. Request from Phil

*. “Words from Phil”

It’s hard to believe that we’re already starting our second year of the newsletter! It has certainly been a learning experience for me as I have been drawing on my column writing for the chapter’s section of the Pepsi-Cola Collectors Club newsletter, the “PCCC Express”, as well as the many helpful suggestions and advice from my fellow editors, Don Dillman and Andrew Stillman. They have been involved since the first newsletter and should have been acknowledged from the first issue.

As I stated in the previous newsletter, our goal is to include what we know about every Dillman group that we are aware of and to feature some of the different groups in each issue. I enjoy compiling these articles because I often learn new information about each group as I reread what I have in the DFA library or as I search the Internet for newly added information that I had not seen previously. I hope you enjoy reading them.

As always, we would certainly welcome any Dillman-related stories or photos that you would like to submit for upcoming newsletters and/or for inclusion in the DFA archives. You may e-mail them to my address above. Thanks!

I recently began receiving a monthly magazine called “Family Tree Magazine.” I didn’t subscribe to it and don’t know why I’m getting it but, based on the past five issues I’ve received, it is well worth your time and money to subscribe. There are loads of great articles and plenty of tips and websites to help with your research.

1. “GERMANY 2009!”

September 30, 2009 will see ten DFA members heading to airports to ensure we land in Frankfurt, Germany the morning of October 1st. Preparations are well under way for our meetings with local German Dillmann/Dielmanns, etc., local historians, and areas that were and are meaningful to our Dillmann ancestors and relatives.

To view the itinerary included with the December 2008 Newsletter, please follow this link: <http://www.dillmanfamilyassociation.org/itineraryDillman%2009.pdf>

For any questions or for further information, please contact Andrew Stillman, DFA Vice-President 2008-2010 at andrew.stillman@unb.ca

Look for lots of news regarding the trip in future issues of DD&A as it will apply to several of the groups in the DNA project!

2. “The Vachel Dillman group”

By Phil Dillman

I like to refer to this group as the “Vachel Dillman group” simply because of his unique first name. I recently learned that the name Vachel is pronounced “Vahh-Kel”, (like “Raquel” Welch).

The majority of the information in this article came from individual research done by both Walter Curtiss Crowell and by John Burdick. Additional information came from Doug Dillman in Wisconsin and from various posts on GenForum.

As of the date of this article, it is believed that Vachel’s father, Samuel Dillman, was born sometime before 1764 and died about 1819 in Gallatin County, KY. Vachel was married four times and, on the affidavit for his fourth marriage, he stated that his father was born in England. One source shows Samuel being married twice, the first time to “Unknown” with whom he had a son named Elijah, born 1790, who married Mary Sutton. Samuel then married “Ann Unknown” with whom he

had a son named Vachel, born 10 Dec 1806, and a daughter named Lydia, born about 1808. According to the 1810 census for Gallatin County, there were two more daughters, their names unknown. Family lore implies that Samuel may have been a Hessian soldier in service to England and that he was brought to America during the 18th century. He was living in Kentucky by 1800 and is listed on an 1806 tax record for Scott Co., KY. Samuel was deceased by the time of the 1820 Gallatin Co. census which lists the household of “Ann Dilmon.” She is also listed in two marriage records in that same county in 1820. The first is a marriage bond from March 1820 between “Johny A. Smith (i.e. Arrasmith) to “Lida Dilmond, d/o Samuel Dilmond” which was witnessed by “Elijah Dilman.” The second is from August 1820 noting the marriage between William Butts and “Ann Dillmon”, widow, performed by Reverend James Cox on August 10, 1820.

Vachel Dillman moved to Henry Co., KY in the late 1820s or early 1830s with his older brother, Elijah. In November 1832, he married 16 year old Polly Ann Jones, daughter of Rev. Dan Jones. The couple farmed in Henry Co. until Polly Ann's death from Cholera in 1850. During that time, they had ten children. In late 1851, he moved north to Clay County, IL with his ten children and his second wife, Zerilda White, widow of Argula Jones. Soon after, Zerilda gave birth to a daughter that died a few months later. Zerilda died shortly thereafter, around April 1852. Two months after that, Vachel married another widow, Luarke Vickrey Green, widow of Elias Green. She had five children from that previous marriage which were welcomed into Vachel's already full home. For some unknown reason, Vachel deserted Luarke around 1864 and returned to Henry Co, KY. Apparently, without obtaining a divorce from Luarke, Vachel married again, this time to the niece of his second wife Zerilda, another widow named Malvina

Ford Jones, the widow of Daniel Jones. They lived in the Gratz precinct of Owen Co. KY, an area that borders Henry Co. There Vachel operated a tugboat until 1867 when, in the process of capturing a stray boat, his leg was caught in a coil of rope. The leg was so badly injured it was deemed necessary to remove it. It was on March 15, 1867, during the amputation of the leg that Vachel went into "surgical shock" and died.

Some of the descendants of the Samuel and Ann Dillman group remained in the area of Clay Co., IL while another branch settled in southwestern Wisconsin in Steuben, with a later generation moving to Prairie du Chien. There is additional information regarding some of the descendants of the group online at Rootsweb.

Two participants in the Dillman DNA project that descend from Samuel closely match the DNA of two participants with the last name of Tillman. One of them lives in Louisiana and the other resides in Sweden.

3.

"Wendell Dillmann of France"

By Phil Dillman

Imagine participating in a DNA project with others that share your last name and the anticipation that you might FINALLY learn which group of fellow family researchers you connect to. At the "mega-reunion" with all of those researchers, the anxiety increases as numerous phone calls are placed to Family Tree DNA to find out the numbers of your markers. Then, the results are learned and, much to everyone's surprise, your DNA doesn't

match any of the other participants in the project! That's what happened at the Dillman mega-reunion to the participant whose family is featured in this article. While many of you know who that participant is, this newsletter is being read by many people outside of this group so we will continue to maintain the privacy of the various participants in the Dillman DNA project.

At the 2008 Dillman mega-reunion, it was learned that there was a person

named Wendell Dillmann that lived in the area of Lembach, Alsace, France in the 1500s and that location made him a potential ancestor of our featured participant. A recent discovery (for me, anyway) of someone's personal genealogical website in France provided the majority of the information found in this article. While I cannot read French, I was able to find my way around their site easily. This link should bring you right to the page - http://ott.fr/public/toutes/ged4web/fd_119.htm#252232.

Their known lineage starts with Wendell Dillmann who was born about 1522 in Lembach, Bas-Rhin, Alsace, France. He married "unknown" and had a son named Jacques who was born in 1586 in Lembach. In fact, according to that website, most of Wendell's descendants remained in, or near, the town of Lembach until the mid-1800s. Jacques married Anna Hickel with whom he had two sons: Thibault, who was born in 1618, and Jean-Jacques, who was born in 1626. Thibault had

three children: Anne Marguerite, Jean-Caspar, and Jean-Martin. Jean Jacques had one son named Jean Valentin. Each of these children married and had children of their own. Interestingly, a great-grandchild of Thibault, named Marie Christine Dillmann, married a great-grandchild of Thibault's brother, Jean Jacques, named Jean-Jacques Bauer.

The immigrant Dillmann was Jacques Dillmann, born February 4, 1837 in Lembach. In the United States, he went by the name of Jacob Dillman and married a woman named Almira Perrine who was born April 11, 1838 in Ohio. They were married September 13, 1864 in Seneca County, Ohio, and they are the great-grandparents of our DNA participant.

Jacob moved to the Chicago area to live with his sister while he was seeking medical treatment but passed away from the illness and was buried in Forest Home Cemetery in Forest Park, IL, a western suburb of Chicago.

4. "Dillmans in LaSalle Co., IL"

Recent communication with Mallory Fitch has led me to her Ancestry.com pages which focus on her Druckemiller side of the family ([Druckemiller and Druckenmiller Families of Germany](#)) but also includes a branch of Dillmans that settled in the area of Hope, LaSalle Co., IL. These are descendants of George Michael Dillman and Christiana Heifer's son Frederick. Frederick married Mary (Polly) Turner who had George Michael Dillman who married Ann Burley. The group is well-documented on the website and includes many photos. If you belong to the Hans Georg Dillmann group, you will definitely want to check it out. Here are some photos from that site –



Calvin & Frances America Dillman Morgan (on right) and family



George Michael Dillman
b. 1815



Ann Burley Dillman
w/o George M.



William P. Dillman
brother of George M.

5.

“DILLMAN REUNIONS”

Several groups of Dillmans hold reunions in different locations each year. In this part of the newsletter, those reunions will be posted with times and locations updated as they become available to us. If you would like your Dillman reunion listed here, please send us the appropriate information. All dates, locations and times are subject to change.

2009 –

Saturday, October 10, 11:00 AM – 3:00 PM Central time
Descendants of Frank & Minnie Walker Dillman
Part of the Hans Georg Dillmann group Tamms, IL

2010-

Last Saturday in June –
Descendants of Andrew and Elizabeth Bruner Dillman
Part of the Hans Georg Dillmann group Near Bloomington, IN

2nd Saturday in July -
Descendants of Rev. C.K. and Bertha Eickelberger Dillman
Part of the Hans Georg Dillmann group Kansasville, WI

DILLMAN MEGA-REUNION #5 Date and location to be determined

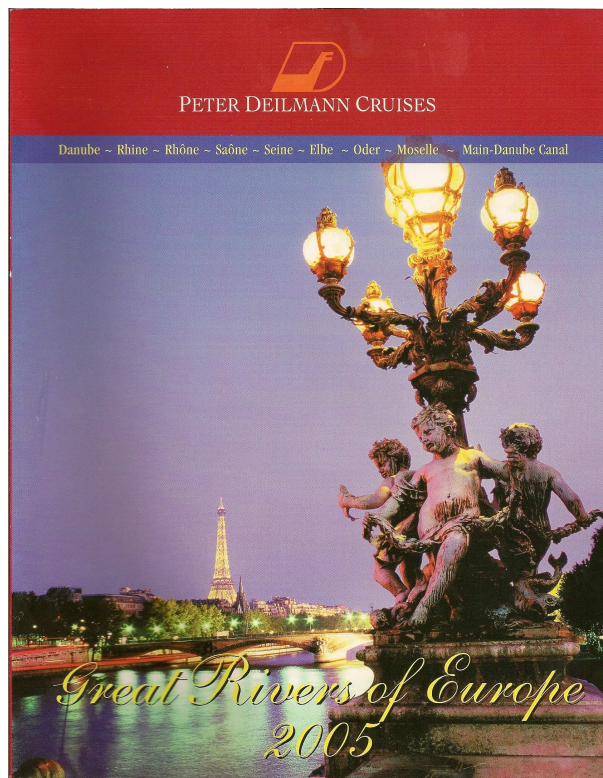
2011-

Last Saturday in June –
Descendants of Andrew and Elizabeth Bruner Dillman
Near Bloomington, IN

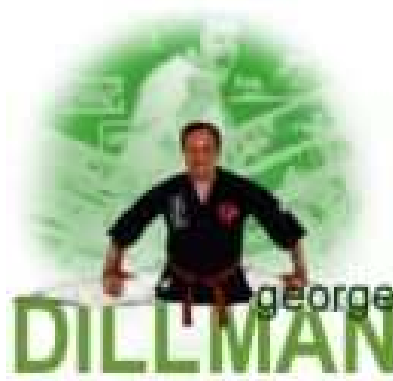
2nd Saturday in July –
Descendants of Rev. C.K. and Bertha Eickelberger Dillman
Charleston, IL

6. “MORE DILLMAN BUSINESSES”

We will continue to feature photos and business cards for Dillman businesses, past and present. If you have anything from a Dillman business that you’d like included, please send it to my e-mail address. Thanks!



Cruise booklet from a local travel broker in Homewood, IL



George Dillman Karate

SPECIAL LIMITED TIME OFFER!

UNIVERSITY APPAREL JUST FOR YOU! FEATURING THE NAME DILLMAN!

OUR TOP QUALITY T-SHIRTS, SWEATS AND HATS MAKE GREAT GIFTS FOR THE WHOLE FAMILY!

All orders must be received by Friday,
OCTOBER 2, 2009
 Place your order today!
www.AOTees.com
1-800-854-4942

Need a bunch for a family reunion or event? See back for quantity discounts.

ALUMNI ORIGINALS
University Apparel Just For You!

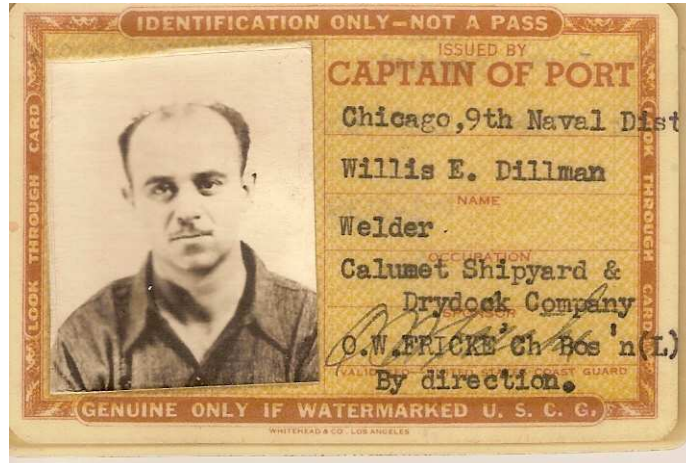
- Adult Long Sleeve Tees - \$19.99
- Kids Long Sleeve Tees - \$16.99
- Adult Sweatshirts - \$24.99
- Kids Sweatshirts - \$19.99
- Embroidered Hats - \$14.99
- Adult T-shirts - \$14.99
- Kids T-shirts - \$12.99
- Toddler Tees - \$12.99
- Infant Onesies - \$16.99
- Adult Hooded Sweats - \$34.99
- Kids Hooded Sweats - \$29.99

Offer received in the mail recently
 (not a Dillman business but looked interesting enough to include)

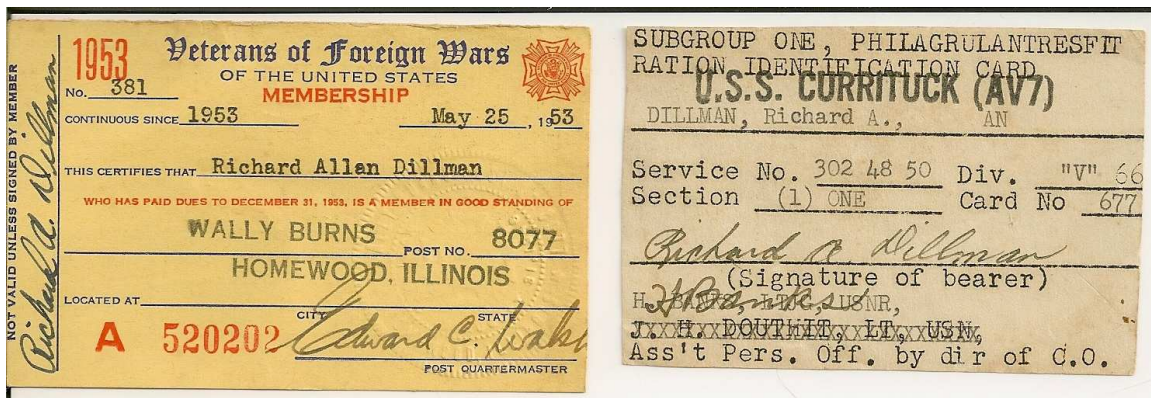
7.

“Request from Phil”

I thought I'd include a couple of examples of other items that we would like copies of from all of you for the DFA Archives/Library. You may scan and send any item to me, as well. Thanks!



This card was issued to my grandfather as he worked as a welder in order to stay out of the armed services during WWII as my grandmother, then a mother of five, requested of him. A very different line of work for a barber. After the war, he went back to being a barber.



These cards were my father's from his service in the Navy on the aircraft carrier U.S.S. Currituck and membership in the VFW after his honorable discharge.

Please let us know your reactions to this issue of the DFA newsletter. Are there any particular features you would like to see in future issues of the newsletter?

“FUTURE ARTICLES”

We would like to include any Dillman-related stories and/or photos that you might wish to submit for upcoming newsletters. We will try to include your submitted stories/photos as quickly as possible.

Phil Dillman, 18351 Cowing Ct., Homewood, IL 60430, pd62pepsi@sbcglobal.net

The DFA newsletter, “Dillman Descendants and Ancestors,” is available by e-mail to all paid members of the Dillman Family Association. Membership is available to any individual with interest in the activities of the Dillman Family Association for \$10.00, which covers the two year period between mega-reunions (August 2008-August 2010)

Membership in the DFA entitles individuals to receive an e-mail copy of each newsletter, and information on other DFA activities. Membership dues should be mailed to Earl Dillman, Treasurer, at 14 Fellview Dr., Pittsford, N.Y. 14534-4014, ed37dillman@gmail.com.

Members may request receiving copies of the newsletter by postal mail instead of e-mail. Donations of \$1.00 per issue to cover the cost of printing and mailing such copies will be greatly appreciated.